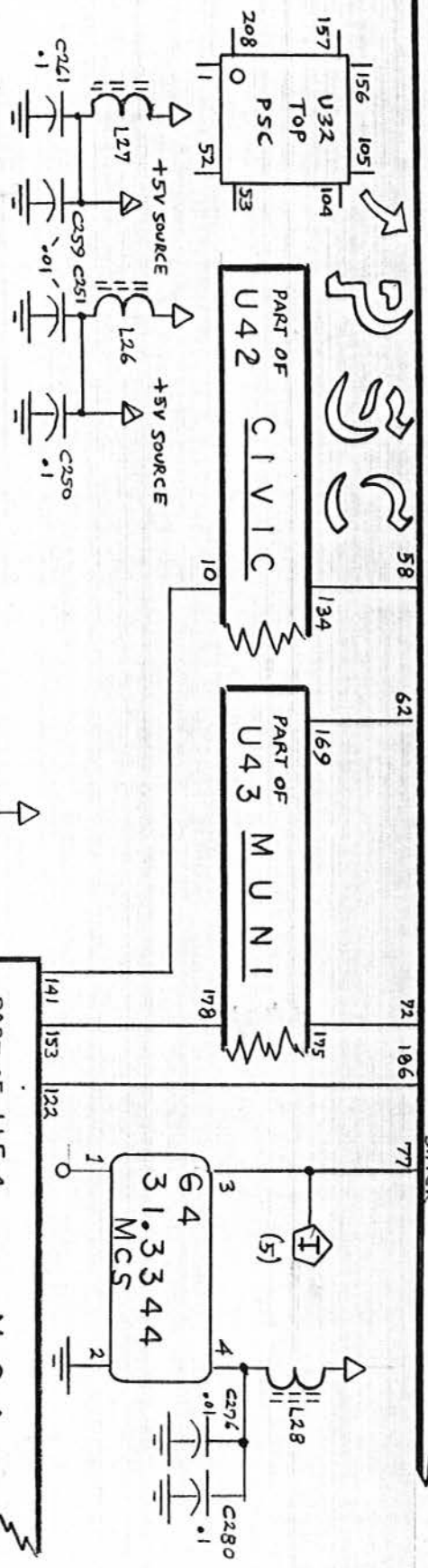


16624-2

= 1, 3, 11, 16, 26, 29, 34, 38, 50, 52, 53, 55, 57, 78, 102, 104, 105, 107, 119, 123, 132, 139, 141, 146, 154, 156, 157, 159, 184, 195, 206, 208 (34351129-a)



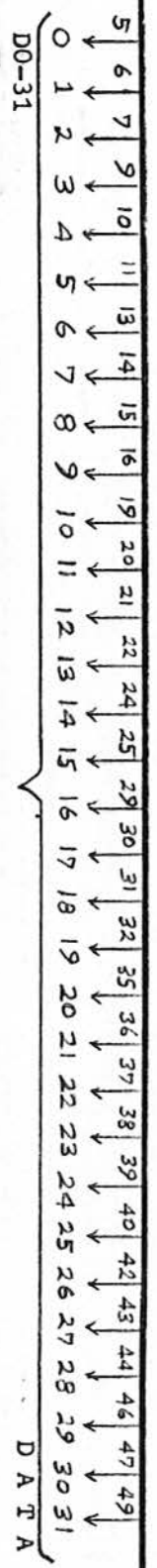
I.C.	TYPE	QTY
U56	74 AC 00	14
U57		7

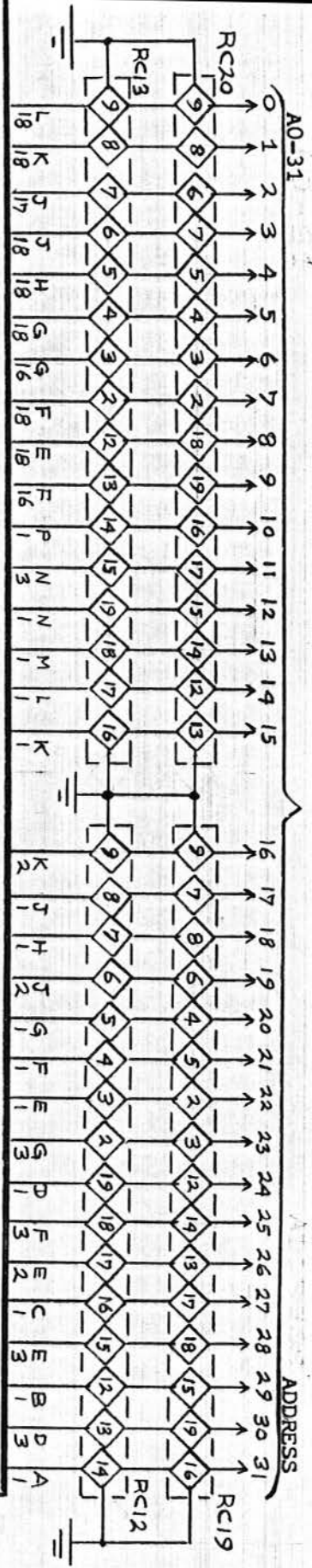
SY I LD OLD ZN DI TCK DCR DEN AEN TRON BR06 B106 B105
CKT BGN DBERN SRBYN CSN LOCKN BRN

3210

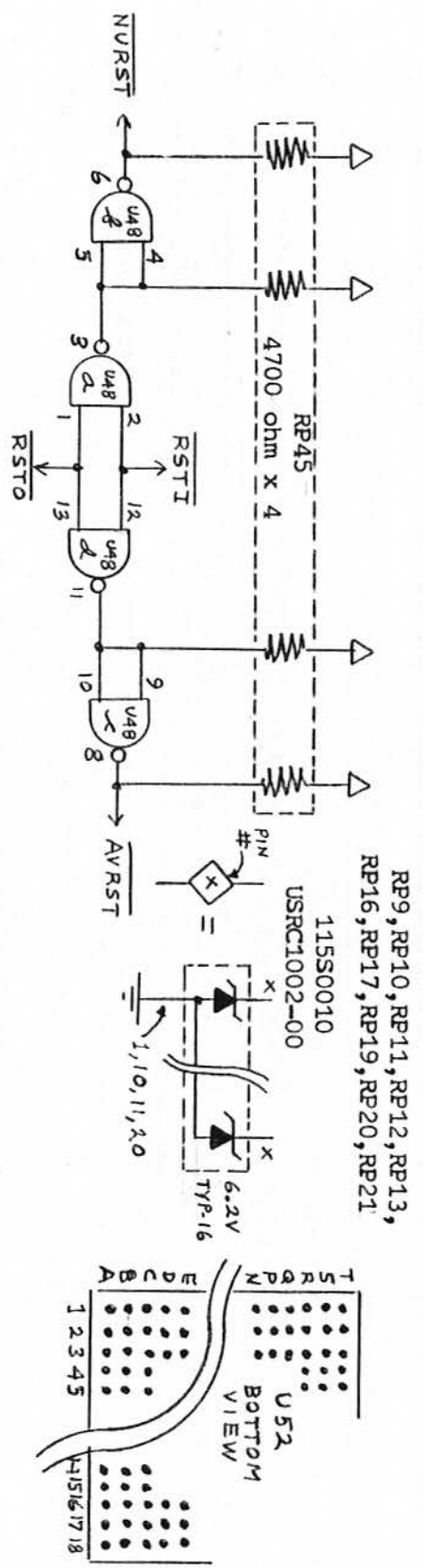
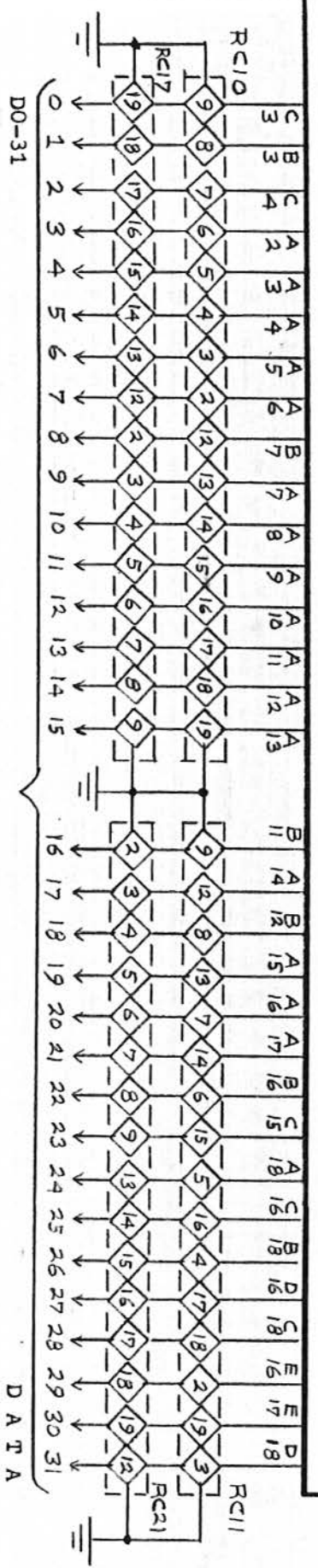
= 1, 8, 17, 18, 27, 34, 41, 50, 51, 59, 67, 74, 83, 84, 92, 99, 106, 116, 117, 126

DSP



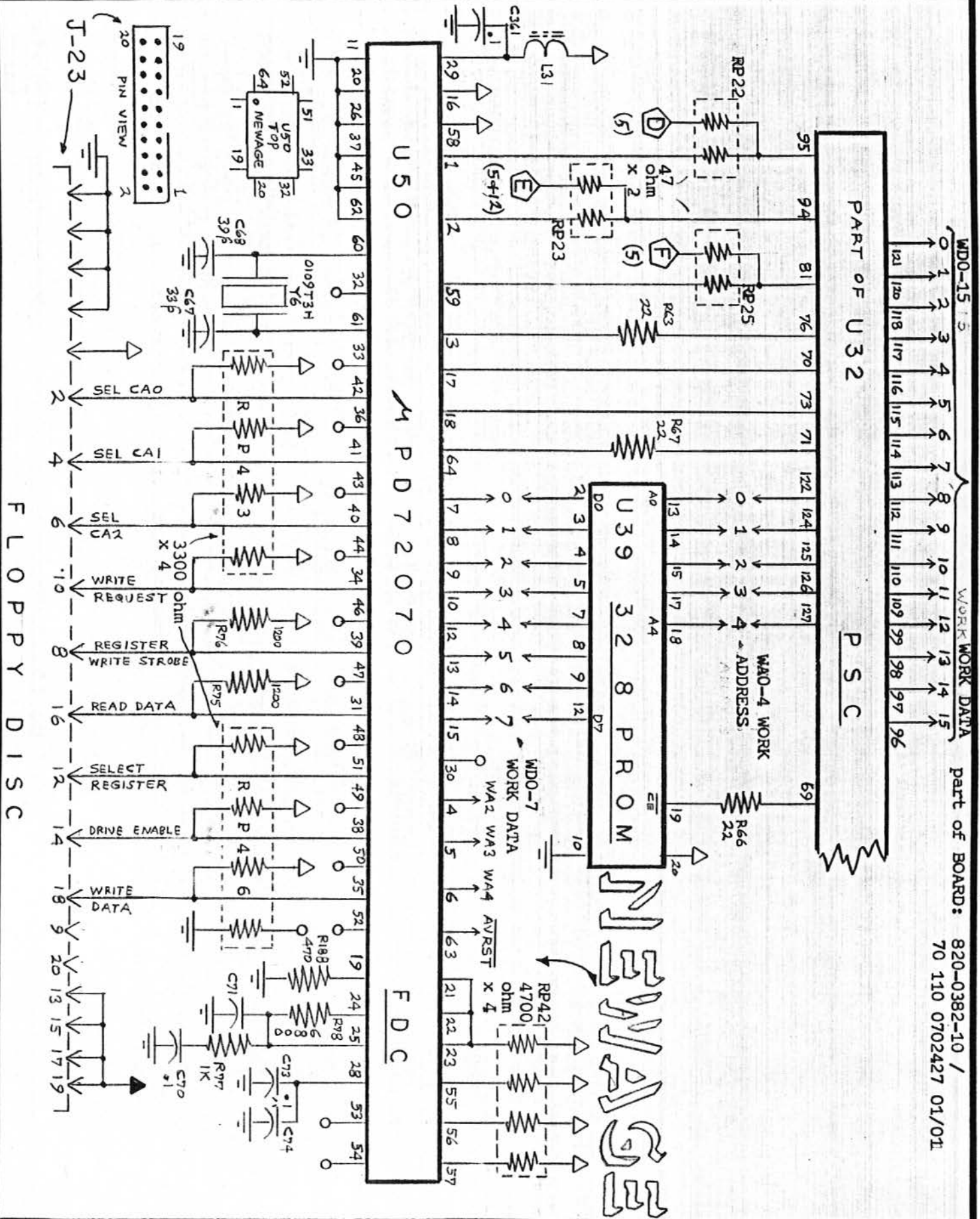


PC10
 B2, B4, B6, B8, B10, B13, B15, B17, C6, C7, C9, C11, C13, D2, D17, F2, F17, H2, H17
 K3, K16, L2, L3, L17, M16, N2, N17, Q2, Q17, R4, R11, R13, S2, S15, S17, T4

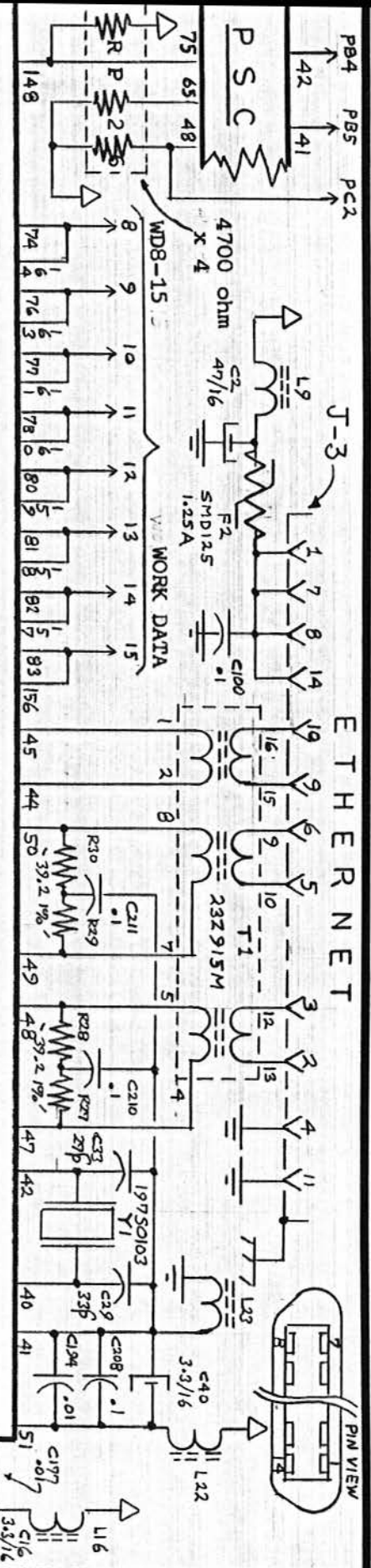


part of BOARD: 820-0382-10 / 70 110 0702427 01/01

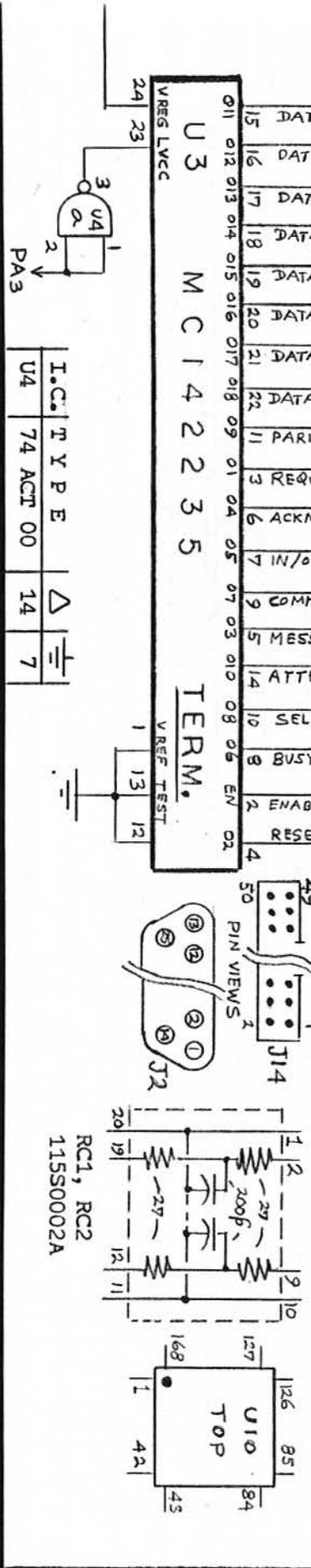
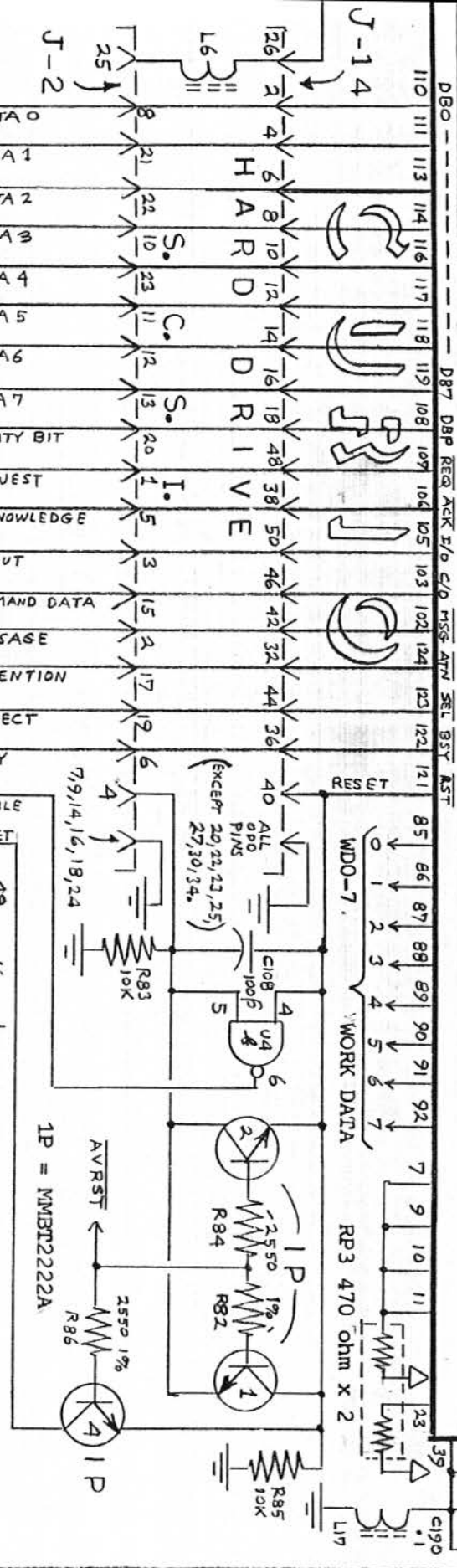
I.C.	TYPE	QTY
U48	74 F 38	14

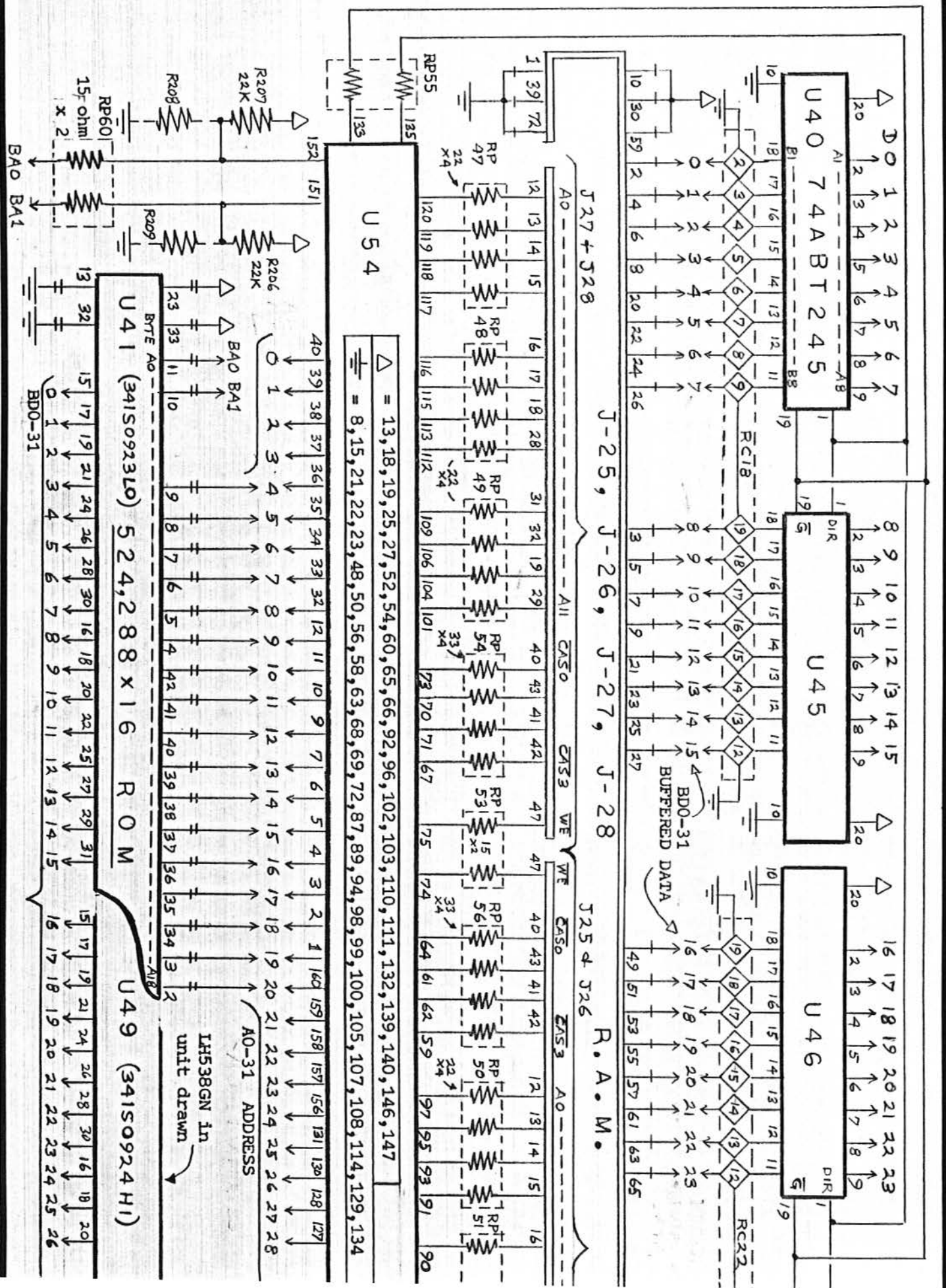


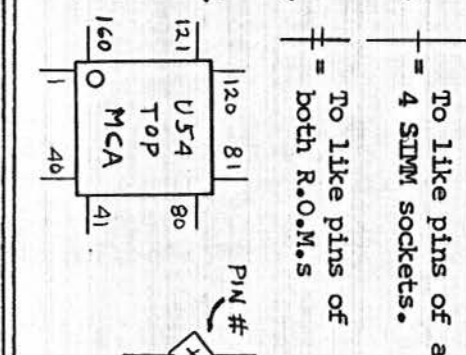
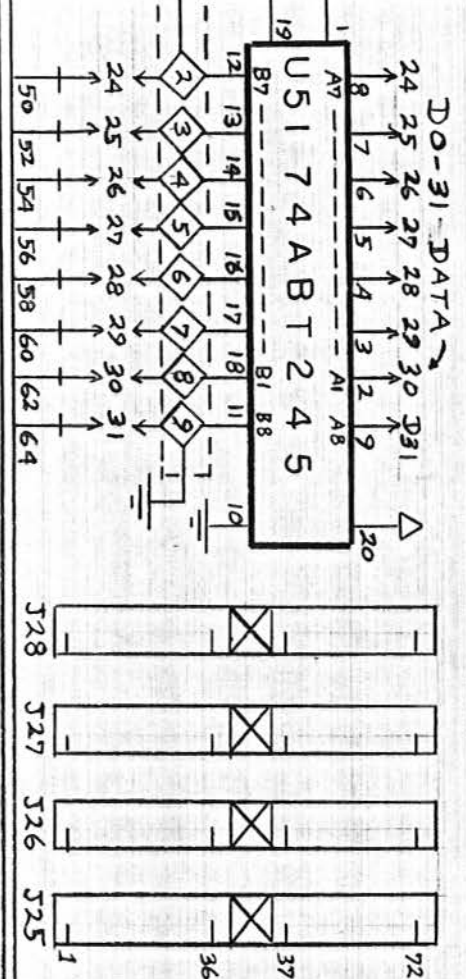
part of BOARD: 820-0382-10 / 70 110 0702427 01/01



129, 141, 147, 162
7 9 C 9 5 0 6 = 2, 13, 17, 28, 33, 35, 36, 37, 56, 72, 73
K L U G E

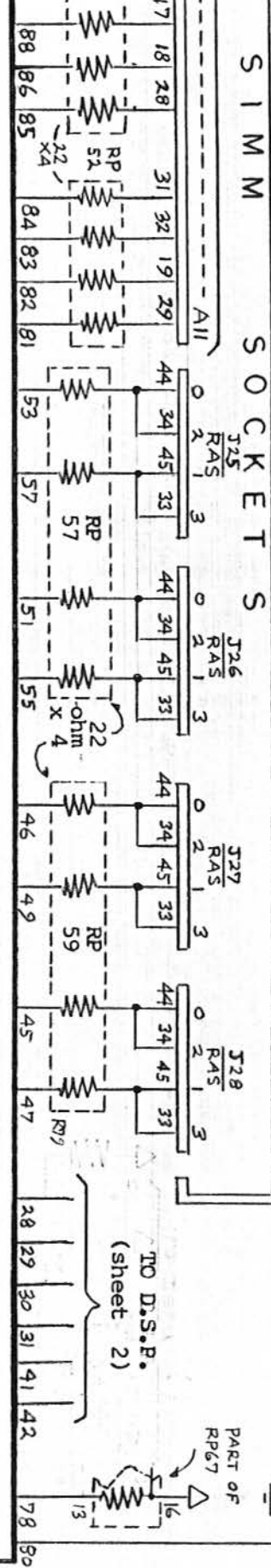
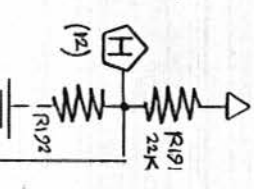






To like pins of all 4 SIMM sockets.
 To like pins of both R.O.M.s

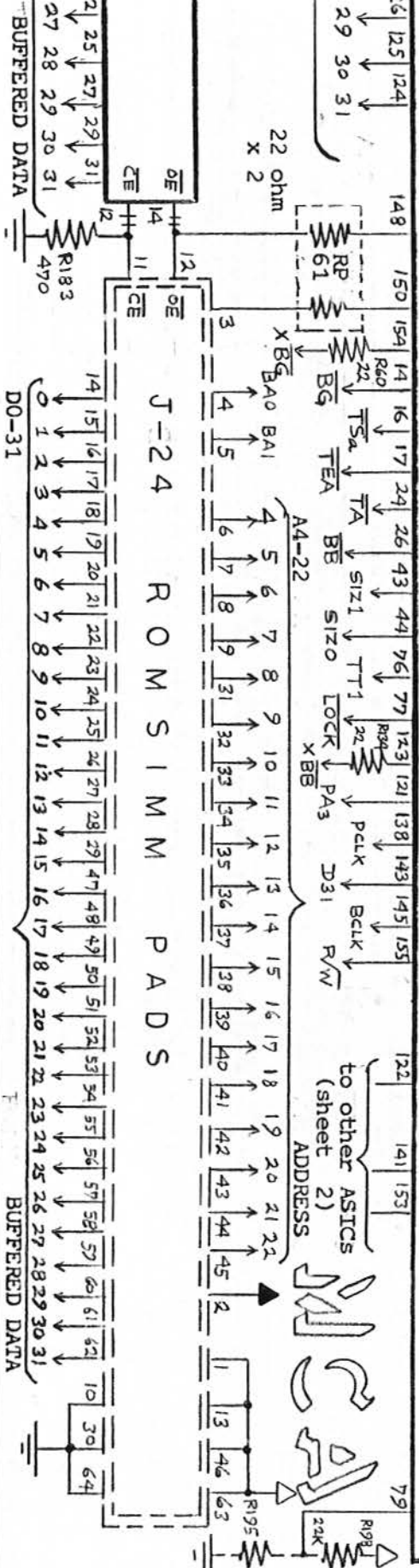
NOTE: All RPxx units this sheet (except RP67) are ceramic resistor strips
 RC18 & RC22 are zener diode arrays:



136, 137, 142, 144, 149

VY16604-2 (343S1097-a)

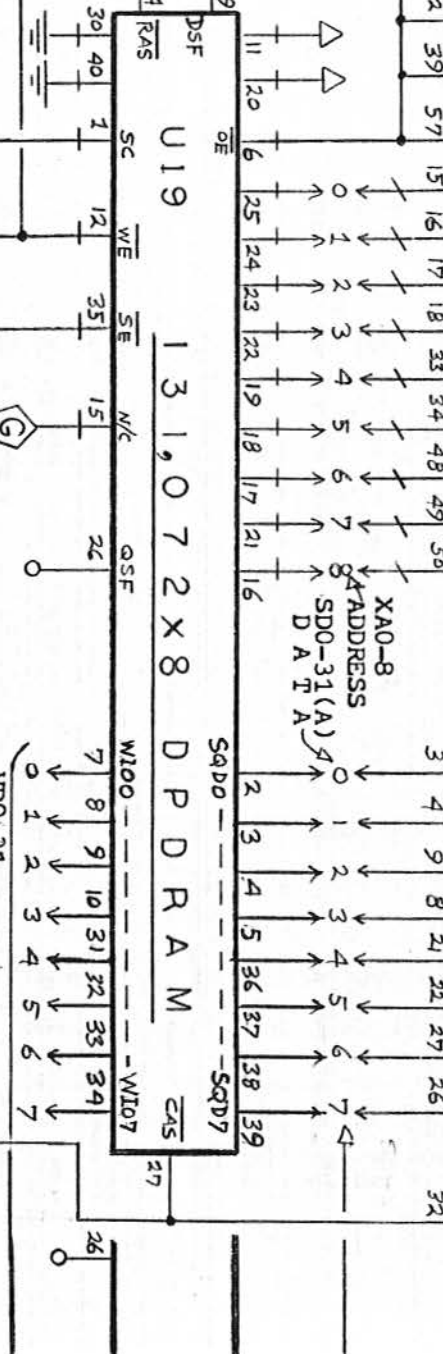
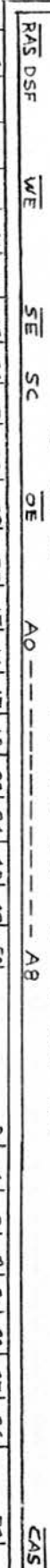
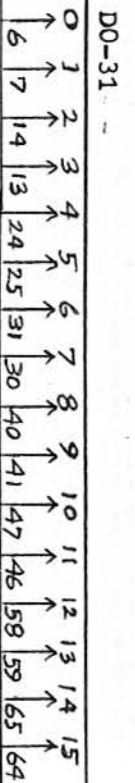
A.S.I.C.



To like pins of both J19a
= & J19b SIMM sockets.

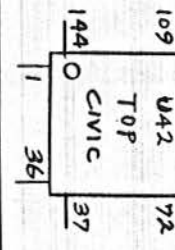
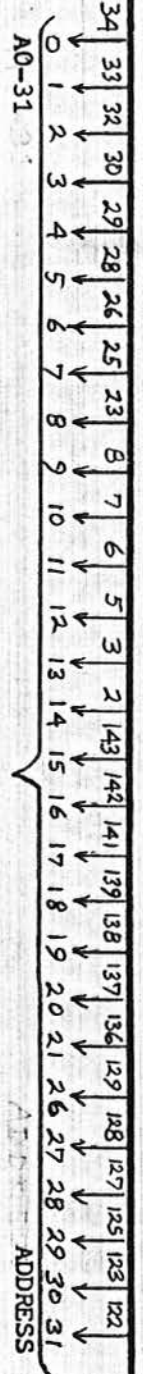
To like pins of all
= 4 DRAM chips.

J-19b RAMS I M M



PART OF U 4 2 = 1,11,18,19,51,54,72,73,89,90,98,100,124,126,132,133,144

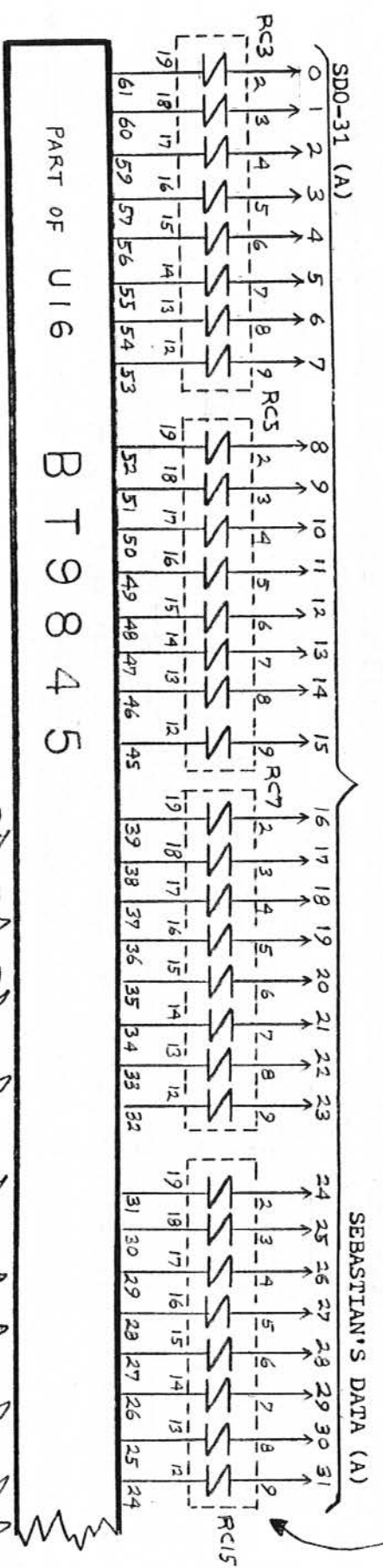
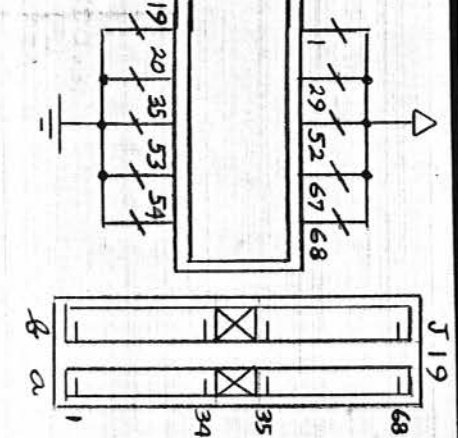
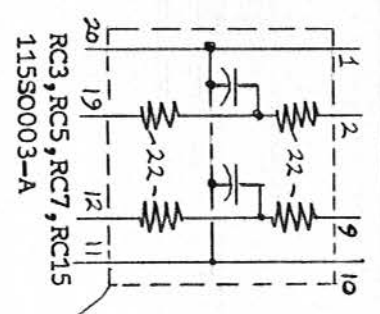
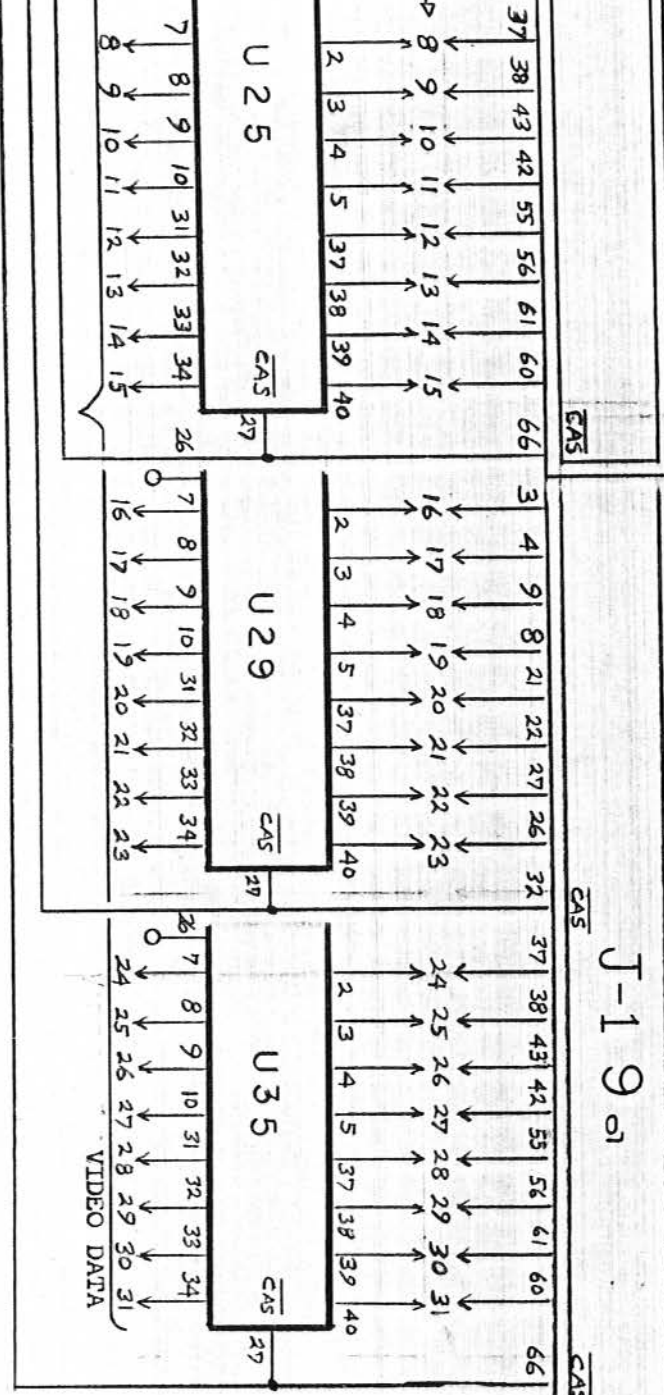
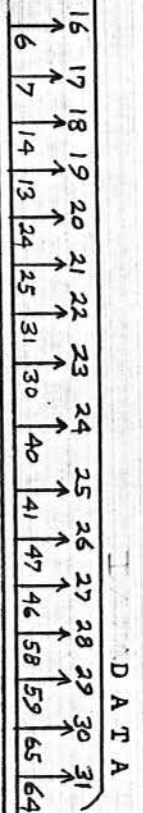
A. S. I. C.



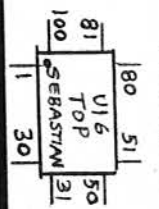
NOTE: Dual Port D.R.A.M. chips are MSM482128AJT in unit drawn.

part of BOARD: 820-0382-10 / 70 110 0702427 01/01





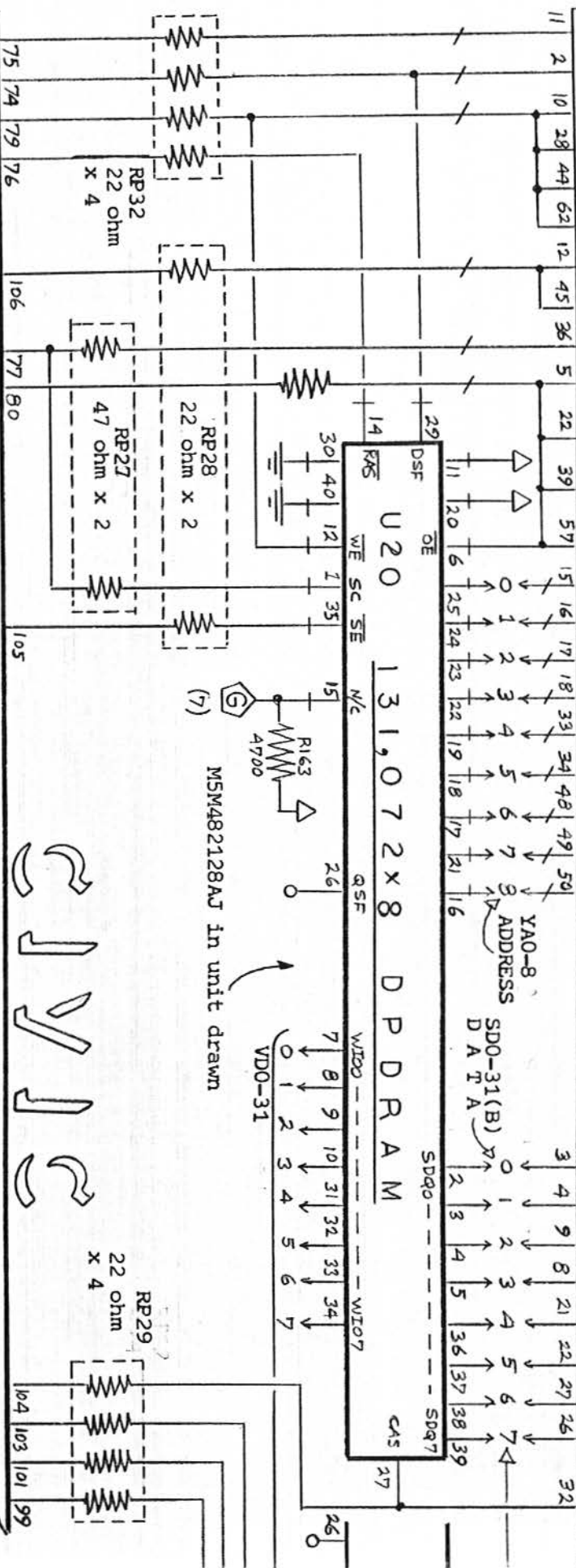
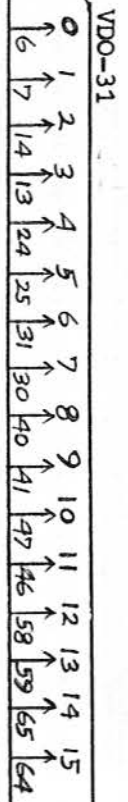
PART OF U16 BT9845



SEBASTIAN'S DATA (A)

To like pins of both J20a & J20b SIMM sockets.

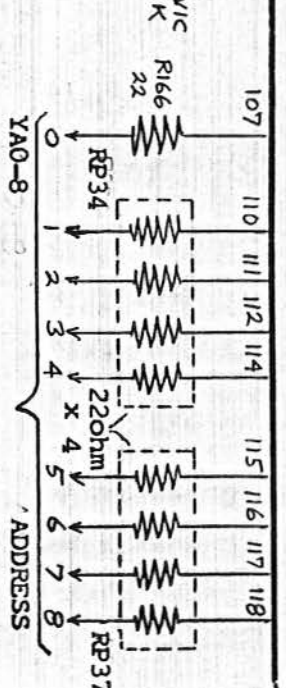
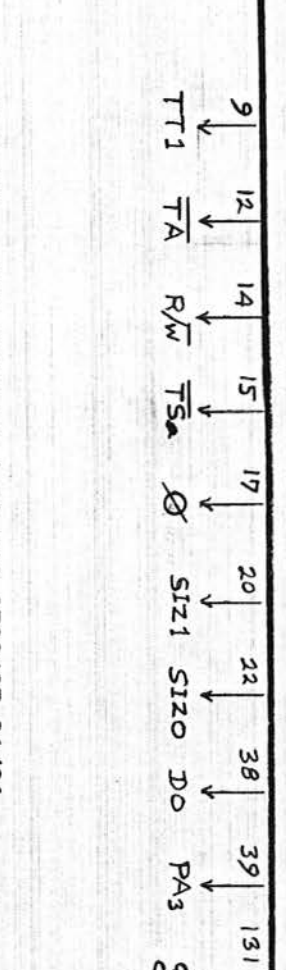
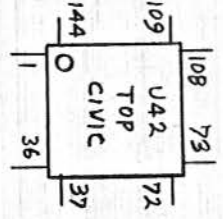
To like pins of all 4 DRAM chips.



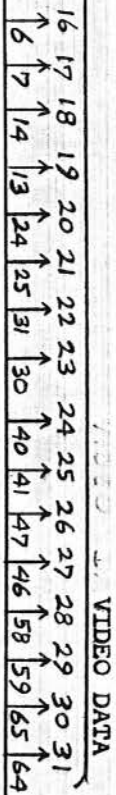
PART OF U42

4, 13, 16, 21, 24, 27, 31, 36, 37, 44, 47, 57, 60, 63, 70, 78, 84, 87, 92, 94, 96, 102, 108, 109, 113, 119, 130, 135, 140

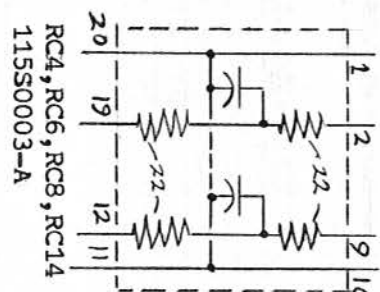
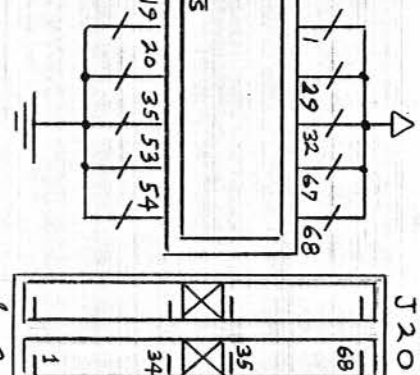
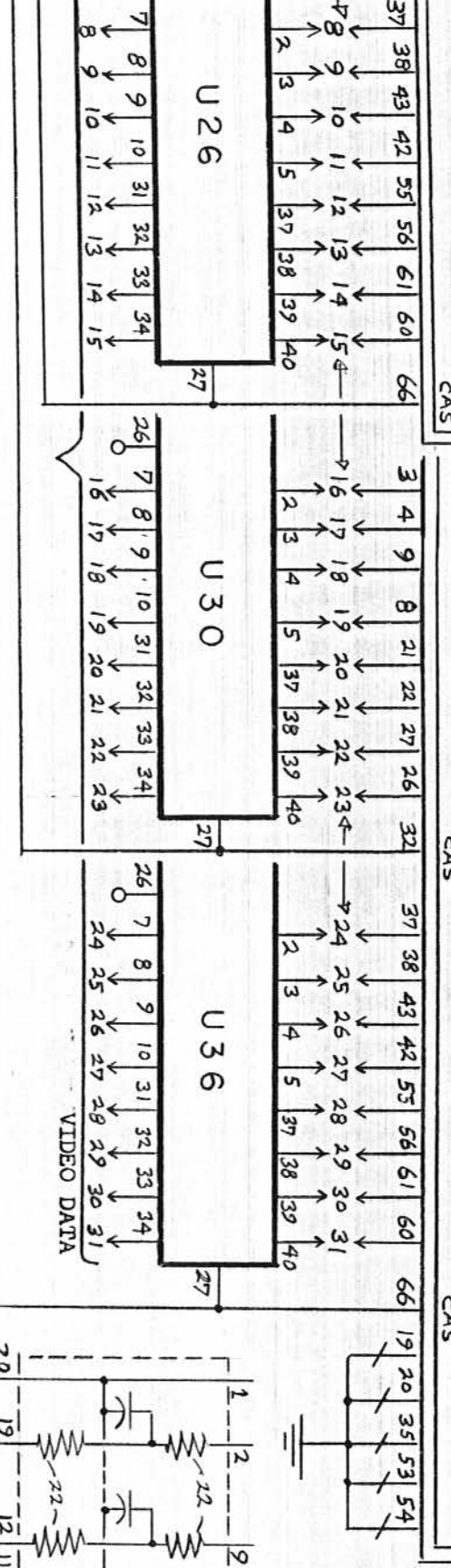
VY16605-2 (34351103A)



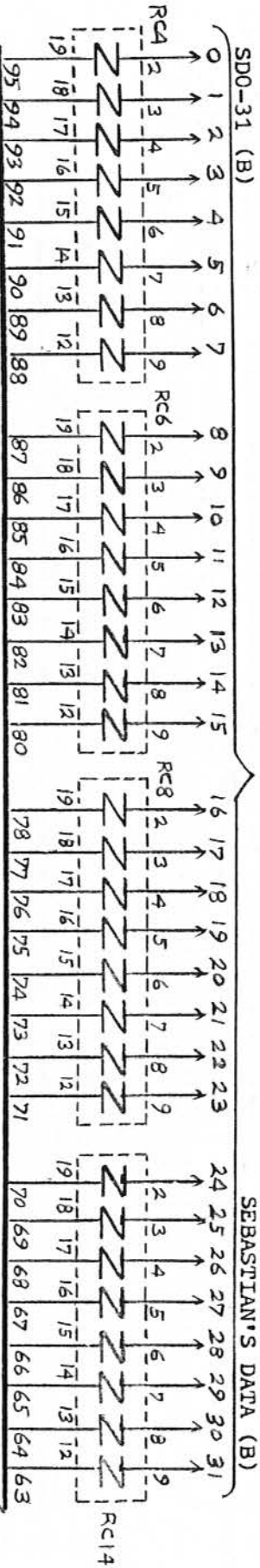
part of BOARD: 820-0382-10 / 70 110 0702427 01/01



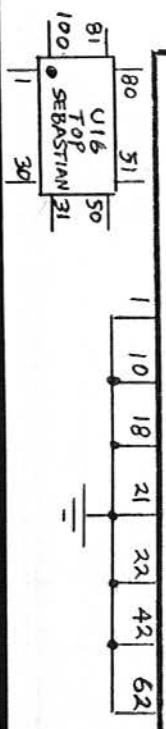
J-2001



RC4, RC6, RC8, RC14
115S0003-A

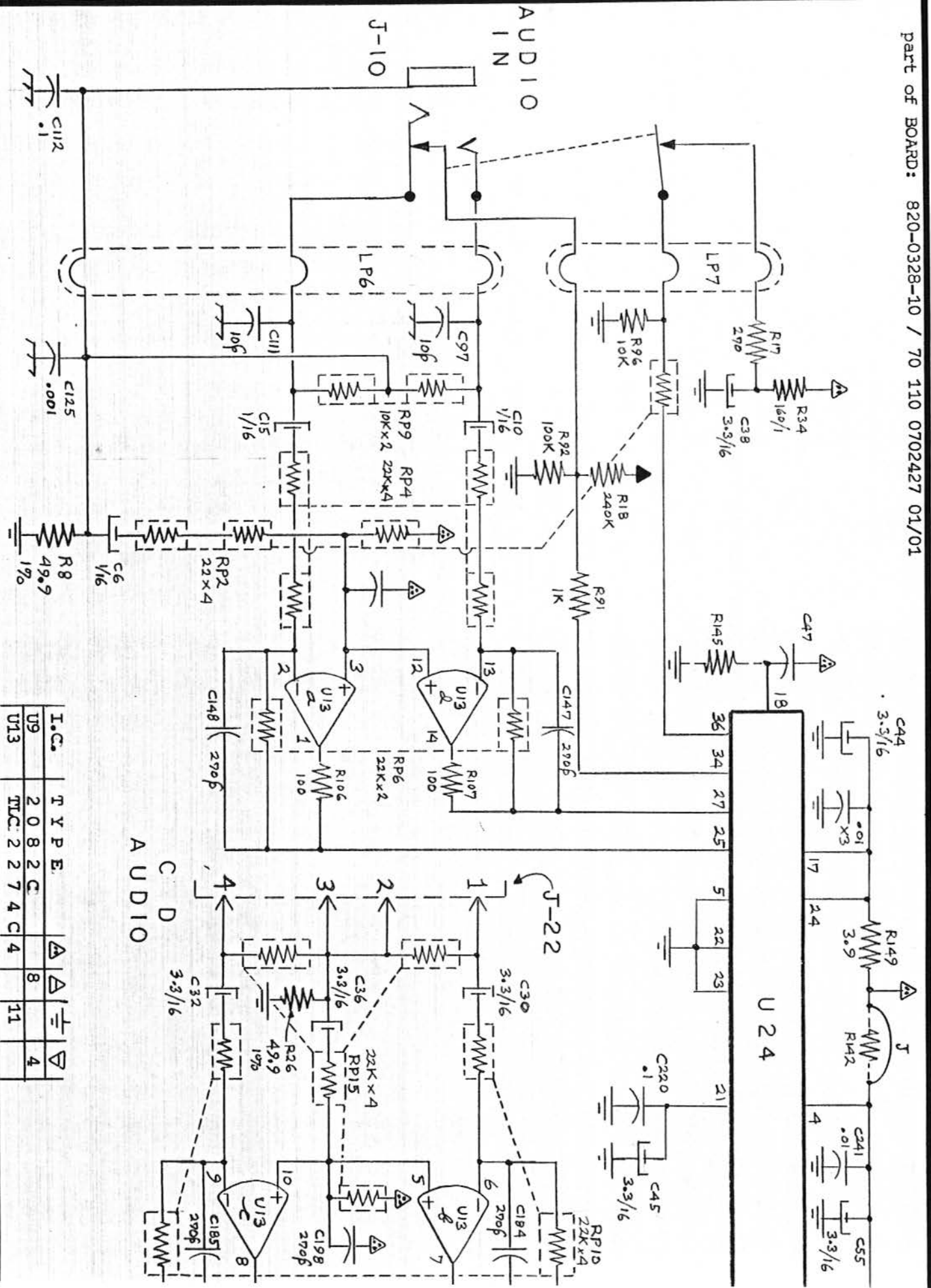


PART OF U16 BT 9845

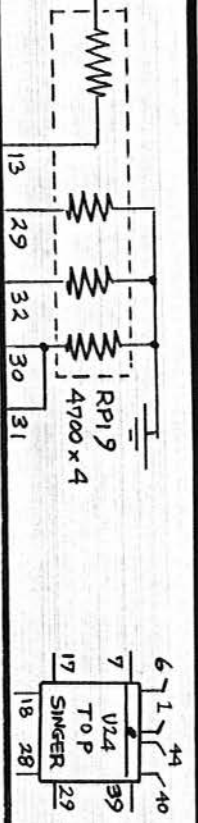


SEBASTIAN

part of BOARD: 820-0328-10 / 70 110 0702427 01/01



I.C.	TYPE	Pin 1	Pin 2	Pin 3	Pin 4
U9	2082C	8			4
U13	TTC: 2274C	4		11	



A S C O 2 3 0 0 (33759622)

+2.5V SOURCE
20

AUDIO

